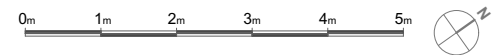
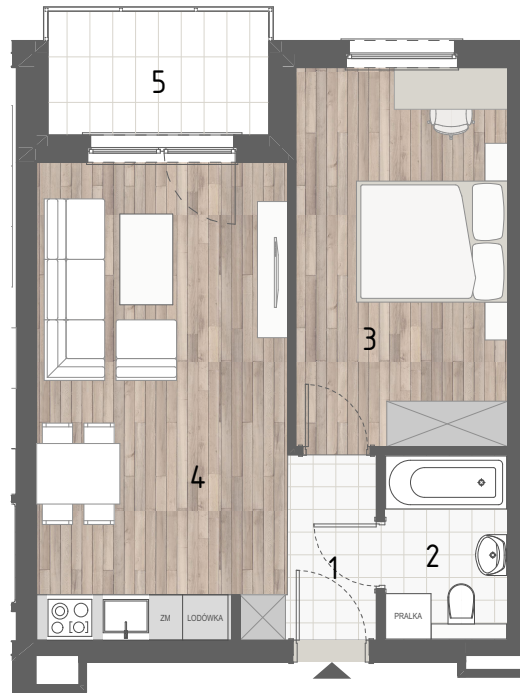


RZUT MIESZKANIA



ZESTAWIENIE POWIERZCHNI

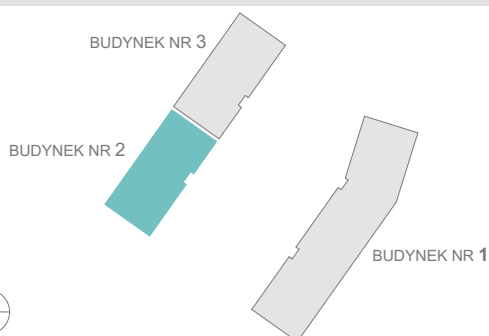
| | |
|--------------------------|---------------------|
| 1.P. POKÓJ | 3,24m ² |
| 2.ŁAZIENKA | 3,99m ² |
| 3.SYPIALNIA | 14,03m ² |
| 4.P. DZIENNY+ANEKS KUCH. | 20,54m ² |

| | |
|---------------|---------------------------|
| RAZEM: | 41,80m² |
| 5.BALKON | 4,77m ² |

LOKALIZACJA BUDYNKU

LOKALIZACJA W BUDYNKU

PIĘTRO I



2A

3B